

HOW FAR  
IS  
TOO FAR?



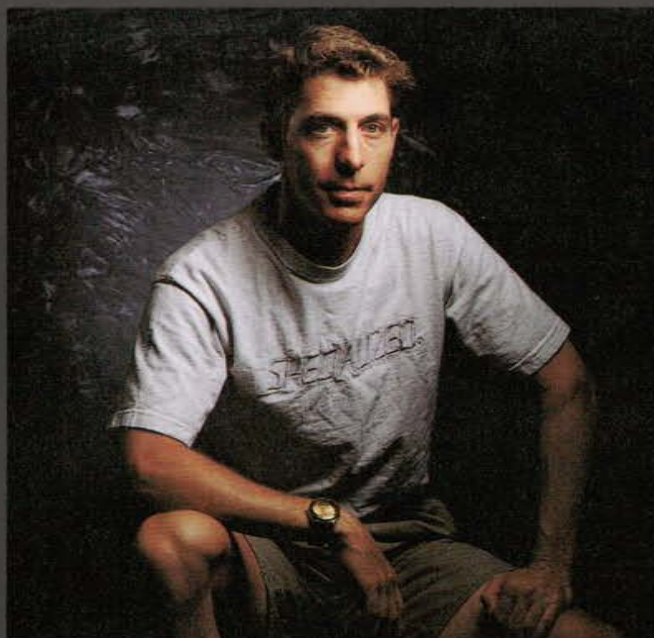


See the man with a moustache down to his chin? Brett Dickson. If he ever asks you to join him on a weekend ride, be forewarned: He just might mean the 140-mile sprint across Death Valley he takes every year. (Brett, you see, designs bikes for us, and he kind of likes to test them out for himself.)

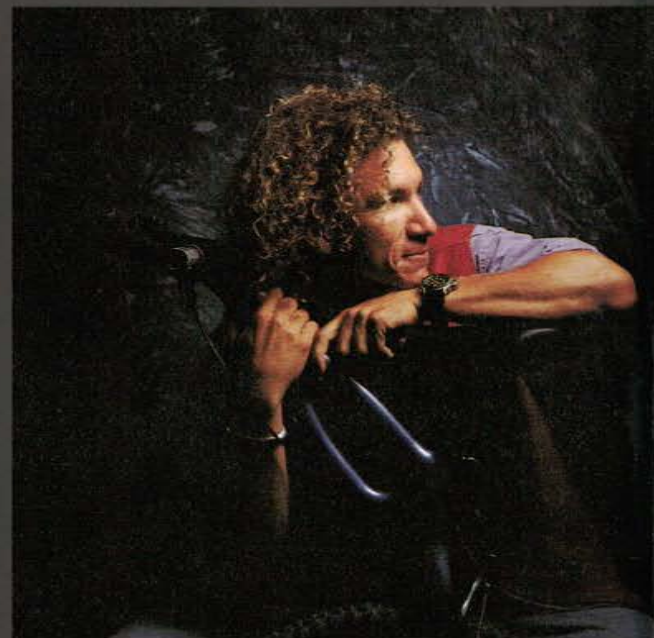
And in the upper left corner? That's Bill Hanson. His rides begin at about 9:30. That's 9:30 P.M. Why? Bill's the brains behind our bike lights, that's why.

And then there's the gonzo rider about to disappear off our front cover. Meet "Insane" Wayne Croasdale: 1992 Dual Slalom World Champion, consultant to the Specialized R&D group, and a man who's made a career of riding down impossibly steep terrain at speeds that are, well, insane.

Now, some might think that these folks carry their love for cycling a bit too far.



Bill Hanson

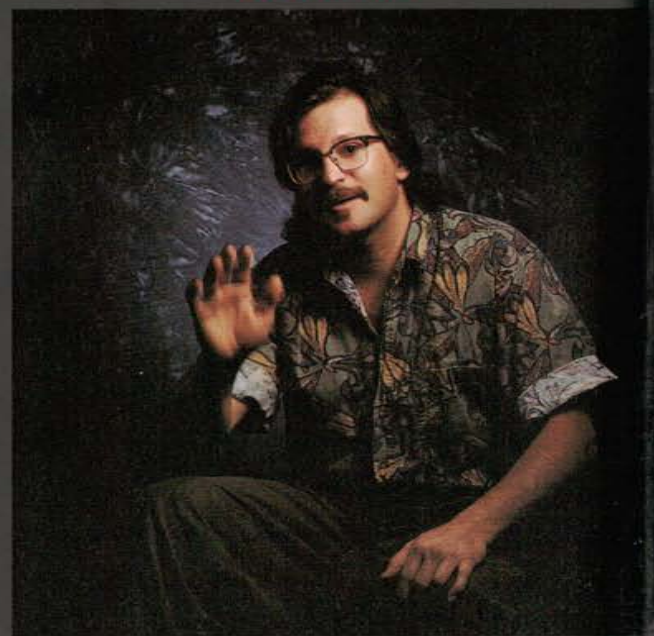


Robert Egger

# IF ANYONE CAN TELL

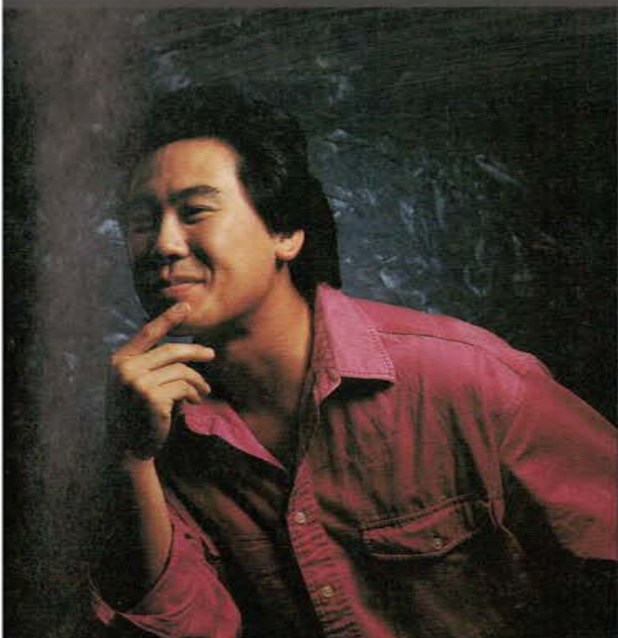


Louie Egan



Mark Winter





Steve Sasaki

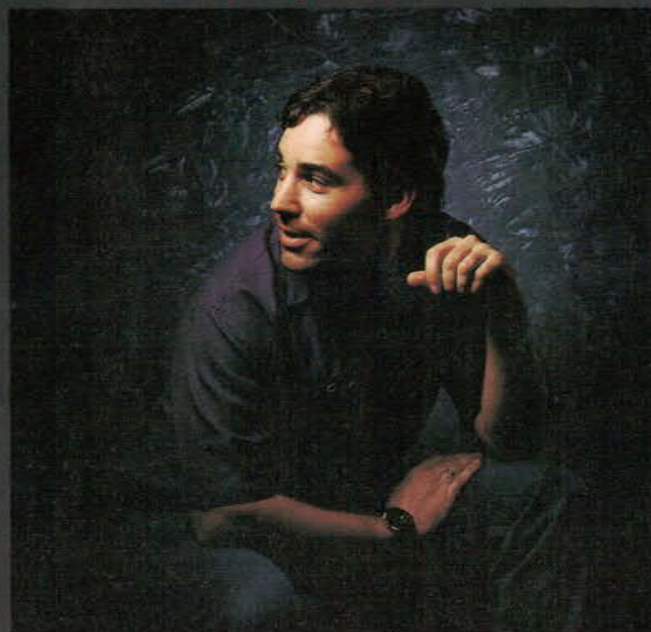


Brett Dickson

# YOU, IT'S THESE GUYS.



Penny Noel



Rodney Hines

Maybe yes, maybe no. But this much is certain:

Nobody designs better bikes than a bike fanatic. And no bike company has so many of said fanatics under one roof than Specialized.

To these guys, more than to anyone else on earth, a bike's perfection is a matter of honor. Innovation here isn't a job, it's a religion—and the last one to come up with a brilliant idea is high priest for the day.

If there's any way a bike can be made faster or lighter or stronger, you can bet your house there are Specialized designers up nights figuring out how. And when they run into a problem they can't solve alone, they find people who can: scientists at DuPont, Stanford University, wherever.

Of course, it's often been suggested to us that there might be easier ways to make bikes (and, Lord knows, cheaper ways).

Now that, in our opinion, is going too far.



# STUMPJUMPER



*Wipe away the caked mud, and you'll find that hard-core mountain bikers are a pretty emotional crowd. Their passions tend to include dawn rides, Mexican food, trail conservation, and a now-legendary bike called Stumpjumper. Every tube is custom specified, every component is performance designed. It debuted a dozen years ago, won a few zillion races since, costs a pretty penny, and is worth a lot more than it costs.*



### Future Shock FSX

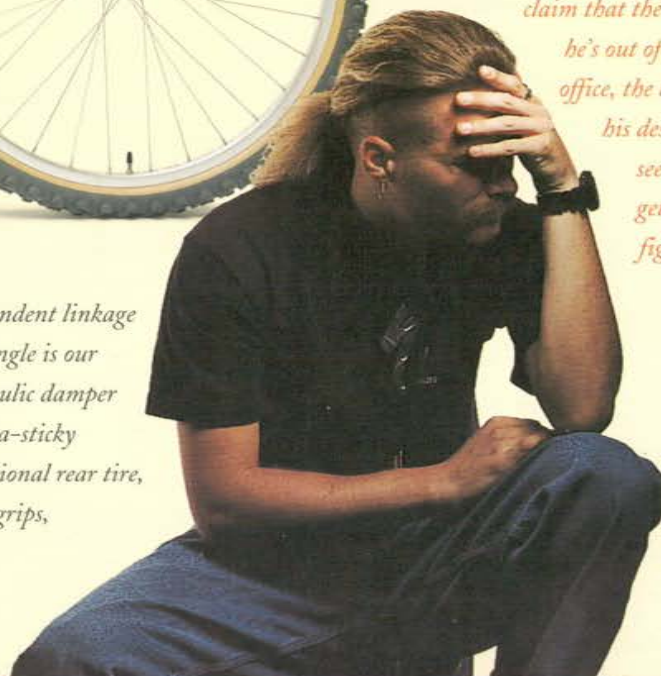
Our designers created Future Shock to be the ultimate front suspension fork (and a World Champion winner). The FSX is direct from our elite S-Works line of racing bikes. Titanium hardware, carbon fiber sliders, butted chromoly stanchion tubes, and a compact crown brace with a Power Hanger. Combines an hydraulic damper with an efficient air spring for lighter weight and precise adjustability. Protective dust boots. Includes a pro tuning kit.



STUMPJUMPER FSR

An all-new racing bike that has suspension freaks drooling: four-point, fully-independent linkage that works perfectly without a bit of influence from your pedaling. The front triangle is our DirectDrive Prestige chromoly steel. Future Shock fork up front, Fox Racing hydraulic damper in back—both fully adjustable. Shimano Deore LX with RapidFire Plus. Ultra-sticky Umma Gumma Shockmaster/S front tire, More Extreme/S Umma Gumma directional rear tire, new Z21 race rims with stainless spokes. AutoPilot Umma Gumma Comp grips, ProLong grey leather saddle, and SPD clipless pedals. Green/Grey.

We were lucky to catch Brett Dickson long enough to shoot him. "I spend as much time outside as I can get away with. I'm with Team Specialized at nearly every national race. When I'm in town, I join the daily lunch loop, and get in a weekend century ride whenever I can. I like endurance trips. I rode two days to Reno through a snowfall. I've covered the 140 miles across Death Valley for seven years running. I've done the Pearl Pass Tour, from Crested Butte to Aspen and back. Very hilly, very long, but incredibly beautiful." Ironically, Brett's colleagues claim that the more he's out of the office, the better his designs seem to get. Go figure.





## STUMPJUMPER M2 FS

Two of cycling's all-time biggest innovations—M2 Metal Matrix frame and Future Shock adjustable hydraulic suspension—together in one incredibly powerful bike. Includes Shimano's new investment-cast Deore XT system with Grip Shift SRT 500, Aheadset system, new investment-cast titanium stem, chromoly-railed grey ProLong leather saddle, ultra-sticky Umma Gumma Shockmaster/S front tire, More Extreme/S Umma Gumma directional rear tire, new Specialized Z21 race rims with WheelSmith butted stainless spokes, Umma Gumma AutoPilot Comp grips, and SPD clipless pedals. Silver/Green.

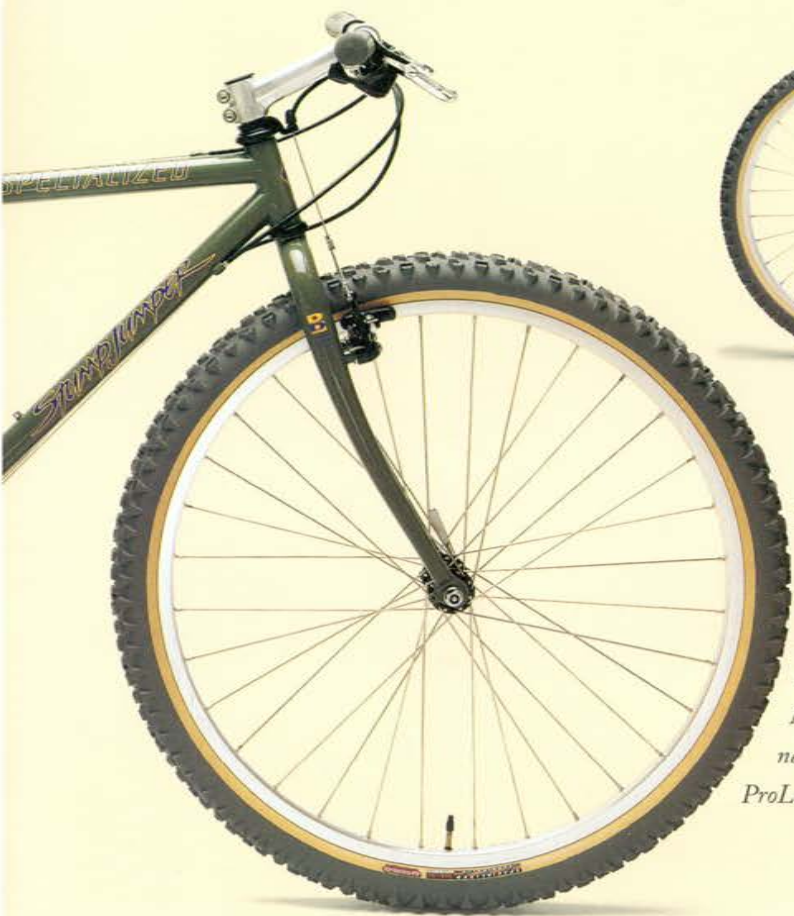


## STUMPJUMPER FS

Unlike many suspension bikes, this one's geometry was redesigned to make the most out of that longer fork. Payoff: more traction uphill, more control down. A lightweight DirectDrive Prestige frameset. Future Shock adjustable hydraulic suspension fork. Shimano Deore LX with RapidFire Plus. Ultra-sticky Umma Gumma Shockmaster/S front tire. More Extreme/S Umma Gumma directional rear tire. Umma Gumma AutoPilot Comp grips, grey leather saddle, and SPD clipless pedals. Dry Green Metallic.







#### STUMPJUMPER

*The classic Stumpjumper racer: trim, tough, and fast. Thin-walled DirectDrive Prestige frame with super-responsive square oval stays, and a 750-gram fork. New Shimano Deore LX Compact Drive with RapidFire Plus shifting. State-of-the-art Aheadset system. Ultra-sticky Umma Gumma Cannibal/S tire up front, Umma Gumma More Extreme/S directional tire behind. Wheelsmith stainless spokes, new Z21 racing rims, Umma Gumma AutoPilot Comp grips, and grey ProLong leather saddle. Grey/Green or Blood Red.*

STUMPJUMPER

#### Ground Control Shoes

*The only high-performance shoe for Shimano's clipless pedal system. Tough synthetic leather lasts longer in wet conditions. A new neoprene cuff and a more convenient strap-ping closure system for a great fit. Other features include: a special homing pocket that ensures fast pedal engagement; lateral support prevents foot roll while pedaling; adjustable heel tension strap; tread pattern for traction on loose terrain. Black/Grey/Blue.*

#### STUMPJUMPER M2

*Borrowed from the aerospace industry, our M2 Metal Matrix Composite creates a frameset that's 20% stiffer, 8% stronger, and 10% lighter than mere aluminum. Outfitted with a superb component package: forged aluminum Aheadset stem, Shimano Deore LX with RapidFire Plus shifters, new replaceable dropout, ultra-sticky Umma Gumma Cannibal/S front tire, More Extreme/S Umma Gumma directional rear tire, new Z21 racing rims, Wheelsmith stainless spokes, Umma Gumma AutoPilot Comp grips, and grey leather saddle. Team Red or BriRac Black.*

5

STUMPJUMPER





# ROCKHOPPER



*There's a very blurry line between those people who love mountain biking, and those who live it. Consider Rockhopper the bike for the blurred. It's strong, light, absolutely respectable at sport races, loaded with serious componentry, and—if we do say so ourselves—pretty affordable. Don't count on trading up next year, because you're going to be happy with this bike for quite some time.*





### Team Glove

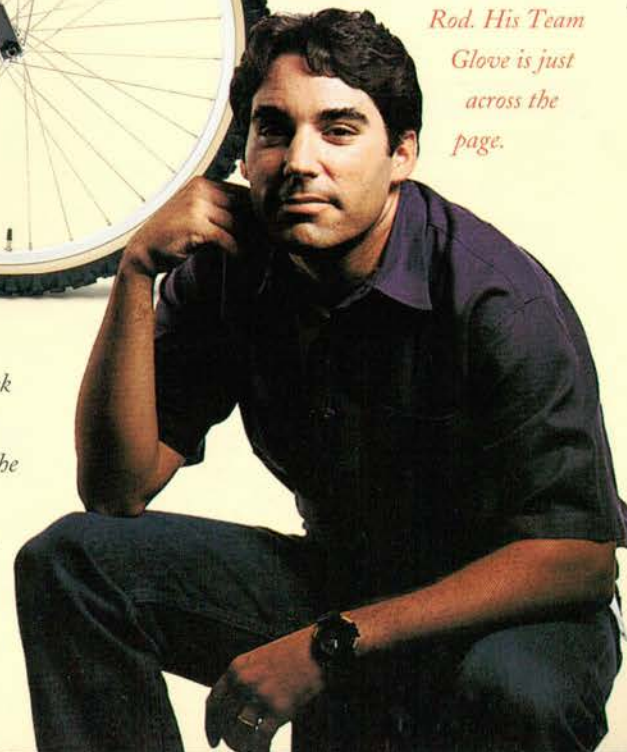
The first gloves designed for all-out mountain bike racing. Features three-quarter length fingers for added protection without sacrificing control. Man-made lamara wears as well as leather, but is machine washable. Unpadded "Gription" covered palm has superior control for racing situations. Neoprene pad over the first knuckle protects against trail branches and leaves. Nylon-mesh back, perforated fingers for ventilation. Under-wrist closure for less interference with wrist movement. Grey/Black.



### ROCKHOPPER COMP FS

Our newest Rockhopper just happens to feature our newest suspension fork: Future Shock Sport, the first elastomer system our designers felt good enough about to design a bike around. Like all our FS bikes, the DirectDrive frame geometry is perfectly adjusted for the longer fork. Team-tested Grip Shift SRT 500 shifters, with STX Special Edition derailleur system, Specialized Z23 rims with stainless spokes, directional Shockmaster front and More Extreme rear tires, and competition grips. Graphite.

One day, out on a particularly long ride, Specialized designer Rodney Hines looked down and began to think about the gloves on his hands. "I'd worn them a hundred times, but they suddenly seemed all wrong to me. You know how glove straps can bunch up on top of your wrists? They all do it. So why not just flip it all over, so the strap's on the bottom and out of the way?" Good idea, Rod. His Team Glove is just across the page.





## ROCKHOPPER COMP

The 'Comp' is for Competition. Just take a gander at this bike's specs and you'll see it's no idle claim. Super-responsive racing geometry designed into the DirectDrive frameset. Top-drawer components: Shimano STX Special Edition, light-action RapidFire Plus shifters, Aheadset system, sleeve-jointed Specialized Z23 rims, stainless spokes, directional Ground Control front tire, More Extreme rear tire, and competition grips. It's light, it's strong, it's a threat to those poor saps you're competing against.

Dark Burgundy.



## ROCKHOPPER FS

If you want to know why there's such a fuss about front suspension these days, take one of these out on a test ride. Enough said. Full-butted DirectDrive frame that's been geometry-corrected to allow for the longer travel of its Tange Struts "S" Suspension Fork. Shimano Alivio with RapidFire Plus shifters and upgraded STX rear derailleur. Shockmaster suspension tire up front, More Extreme tire behind, Specialized X25 rims on both. AutoPilot grips. Dark Green Metallic.





## ROCKHOPPER SPORT

*The same chromoly Direct-Drive frameset as our basic Rockhopper, but with a few interesting additions. Such as Shimano's new STX components, and the hot new Specialized Z23 aluminum rims. Also: directional Ground Control tire up front, More Extreme behind, and AutoPilot grips. Black or Steel Violet.*



## ROCKHOPPER

*This is the bike people come to when they've decided to stop throwing money away on "bargain" bikes. (It's also ideal for those who want to start out in mountain biking in a very big way.) Weighs in at just 26 pounds, thanks to our exclusive DirectDrive Light chromoly steel frame and fork. New Shimano STX/Alivio gear system and RapidFire Plus shifters. Ground Control tires with alloy rims, and AutoPilot grips. Blood Red or Slate Green.*

## Trick Release

*Superlight, titanium quick-release skewers for bikes that would rather float than roll. Ergonomic design created for our S-Works racing line. Easy to secure and release, without squeaking or twisting. 79g wheel set, 30g seat.*





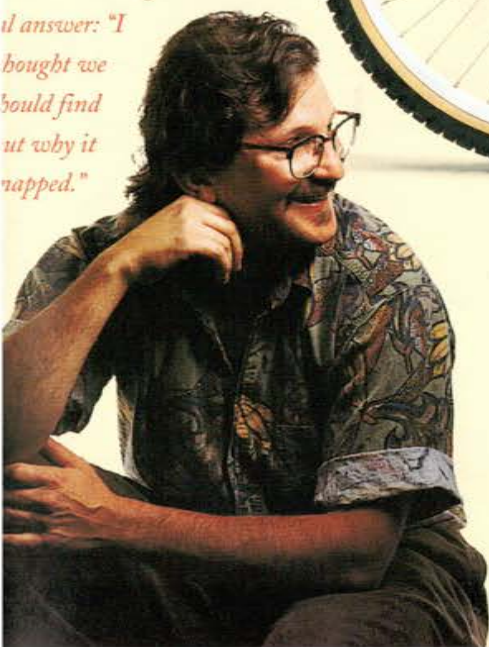
# HARD ROCK



*Ever wonder why automakers like Ford and Toyota spend fortunes on race cars? It's because they learn things about power and handling that can later be worked into the Escorts and Camrys you drive off the lot. The same "trickle down" practice applies here: Much of the basic Hardrock design can be directly traced to the costly, hand-built bikes we've created for our Team Specialized racers. Sure, the price is right. But more importantly, so is the ride.*



In his first week on our R&D staff, Mark Winter rigged up an untested, experimental off-road frame for the weekend: "I'm well into my ride, downhill all the way, not another soul within miles, my dog running along behind me. I hit... something. I still don't know what. The frame completely snaps, and I'm in the dirt. My left shoulder's popped completely out, and my chest is all cut up." So what does Mark do, but uses the dog's leash to make a sling for his bad arm, hoists the shattered bike with his good arm, and starts the long uphill climb back to his car. The question, of course, is why someone with a dislocated shoulder would bother hauling a ruined bike five yards, let alone five miles. Mark's logical answer: "I thought we should find out why it snapped."



#### HARDROCK FS

Butted DirectDrive chromoly steel frame with Future Shock geometry (designed to allow for longer fork travel). Shimano 21-speed gearing, fast-action Grip Shift 300i shifters, Shockmaster front tire (especially designed for front suspensions), and More Extreme rear tire. Dark Green.

#### Pro Control

Our top-of-the-line competition tire is a superb choice for aggressive off-road riding through all kinds of conditions. Very positive traction, very predictable control, very lightweight.

Excellent hook-up under power, steering, and braking. The extra wide knob spacing not only improves traction, it actually helps shake off mud.

Direction-specific pattern works well as both a front and rear tire. Also available in our super-sticky, Umma Gumma soft rubber compound for competition racing. 80 psi. Wire bead (standard black) or Kevlar bead/folding "S" version (Umma Gumma, Black).





### Mountain Cage

Stiff, strong, and reliable. Injection molded, corrosion-resistant composite top section "snap-locks" onto your bottle.

### HARDROCK

Even though it's our lowest-cost mountain bike, not an inch of the classic Hardrock is cheap or knock-off. An incredibly solid, very comfortable ride—thanks to a race-tested, DirectDrive custom butted chromoly seat tube. An easy-action, foolproof Grip Shift is teamed with Shimano's Hyperglide drivetrain. Rugged Crossroads II tires on Araya alloy rims, SuperSoft saddle on a micro-adjustable seatpost, and Quick Release wheels. Teal or Steel Metallic.

HARDROCK

12



### HARDROCK ULTRA

Our designers love this bike. It's gritty enough for rough trails, comfortable enough for day-long rides, well-suited to street use, and very hot looking to boot. The lowdown: a DirectDrive custom butted chromoly frameset and a resilient DirectDrive fork,

Shimano's new Alivio drivetrain with RapidFire Plus shifters, Crossroads II tires on Araya alloy rims. Super Dark Purple Metallic or Silver Flip.

HARDROCK







#### HARDROCK SPORT

*People who tend to be hard on things—jeans, cars, whatever—are made for this bike (or is it vice versa?). All-chromoly frame tubes can out-tough just about anyone. The ride, though, is anything but tough: Shimano's 21-speed Hyperglide with easy-action Grip Shift, Shimano multi-condition brakes, Quick Release wheels with Araya alloy rims, and our own GelSoft saddle. Indigo or Black.*

13



#### Dirt Rodz II

*An economical bar end, designed by pros. Guaranteed to afford as many hand positions as our high-end Dirt Rodz. Made of tough, chromoly steel with extra room in the extensions. 228 g.*



# CROSSROADS



*The one thing you should know about the people at Specialized is that we're in this business for two reasons: to build great bikes, certainly; but also to help people like you learn to share our love for cycling. That's why we created Crossroads. It's the perfect, all-around fitness bike that's both nimble and stable, dependable and adventurous, equally at home on dirt and pavement. Hop on, take off, and have a good time—it's that simple.*



Accessory designer Steve Asaki got his first real taste of our R&D group during his job interview. "At first, everything seemed nice and friendly. Then they asked me to join their daily lunch ride: a 25-mile loop around Morgan Hill. I wouldn't have minded so much, but they kept popping these tough interview questions on me just as we'd start heading up a really steep part of the trail. Personally, I think I could have given them any answers—they mostly wanted to see what kind of rider I was."



#### CROSSROADS XP

The challenge to our designers was to create the most serious, performance-driven sport bike imaginable. Their response: a fully-butted, all-chromoly steel frame and fork. An ingenious Girvin Flex Stem that acts as a suspension system, making it more comfortable—and less tiresome—to ride over ruts, rocks, and rails. Shimano's Alivio 21-speed Hyperglide system, activated by a simple twist of the Grip Shift. Plus all-weather Nimbus II tires, Araya alloy rims, stainless steel spokes, GelSoft saddle, and mid-rise bars for a balanced riding position. Warm Forest.



#### Speed Zone Computer

Reliable, easy to install, accurate, and waterproof. At a touch, it gives you current, maximum, and average speed; trip and total distance; trip time (with auto stop); and time of day. Three-year battery and a two-year warranty. Black, Silver Pearl, Blue Pearl, Purple.



**CROSSROADS SPORT**

*You say you like chopped-up detours as much as a nice, smooth road? Have we got a bike for you. Our famous, tough-as-nails chromoly steel frame and fork. Girvin Flex Stem smooths out rocky rides without the expense of a full suspension system. SunTour's 21-speed Powerflo gearing with Ergo Tech shifters. Quick Release wheels. Nimbus II tires, alloy rims, GelSoft-padded saddle, and stainless steel spokes. Women's model available. Ozone Blue.*





#### CROSSROADS

*A truly versatile bike (in both unisex and step-through women's models) with wide-ranging gearing and a sloping top tube design for better control and comfort. Chromoly steel frame. Easy-to-use, 21-speed Shimano Drivetrain with Grip Shift. Nimbus II tires on alloy rims. Handy Quick-Release wheels and seatpost design. Two-inch rise bar for upright riding. Women's model includes an extra-padded GelSoft saddle. Lake Green, Burgundy Metallic.*

CROSSROADS



#### CROSSROADS CRUZ

*Sporty, simple, and sure-footed: That, in a nutshell, is what our lowest-cost Crossroads is all about. Featuring a classic frame design of tough steel, a Shimano Hyperglide drive train, a simple-to-use Grip Shift (just twist the handlebar grips to shift), Quick-Release wheels, Nimbus II tires on Araya alloy rims, and a two-inch rise bar for easy-on-the-back upright riding. Aquafresh or Plum Grape.*

CROSSROADS



#### Racer's Edge

*Who has time to close the valve on their water bottle when they're powering uphill? This 24-oz. bottle's valve is self-closing, and its tapered shape is easier to slip into the cage in a hurry. Convenient, no-leak screw top is large enough to accommodate ice cubes.*



## TRAIL ADVOCACY



*The bad news is that thousands of park trails are now off-limits to bike riders. The worse news is that more are headed for the same fate. But there's good news, too: Her name is Linda DuPriest, our Advocacy Coordinator. Linda helps state and local bicycle associations reopen park trails to hikers, equestrians, and cyclists alike. As if that weren't enough to keep her busy, Linda also supports fundraising events by local bike clubs, donates bikes to park rangers from California to Ohio to Vermont, and sits on the board of directors of IMBA, the International Mountain Bicycling Association. On a personal note, Linda asks that any cyclist who takes the issue of trail access seriously join IMBA. Call or write: IMBA, P.O. Box 412043, Los Angeles, CA 90041. (818) 792-8830.*



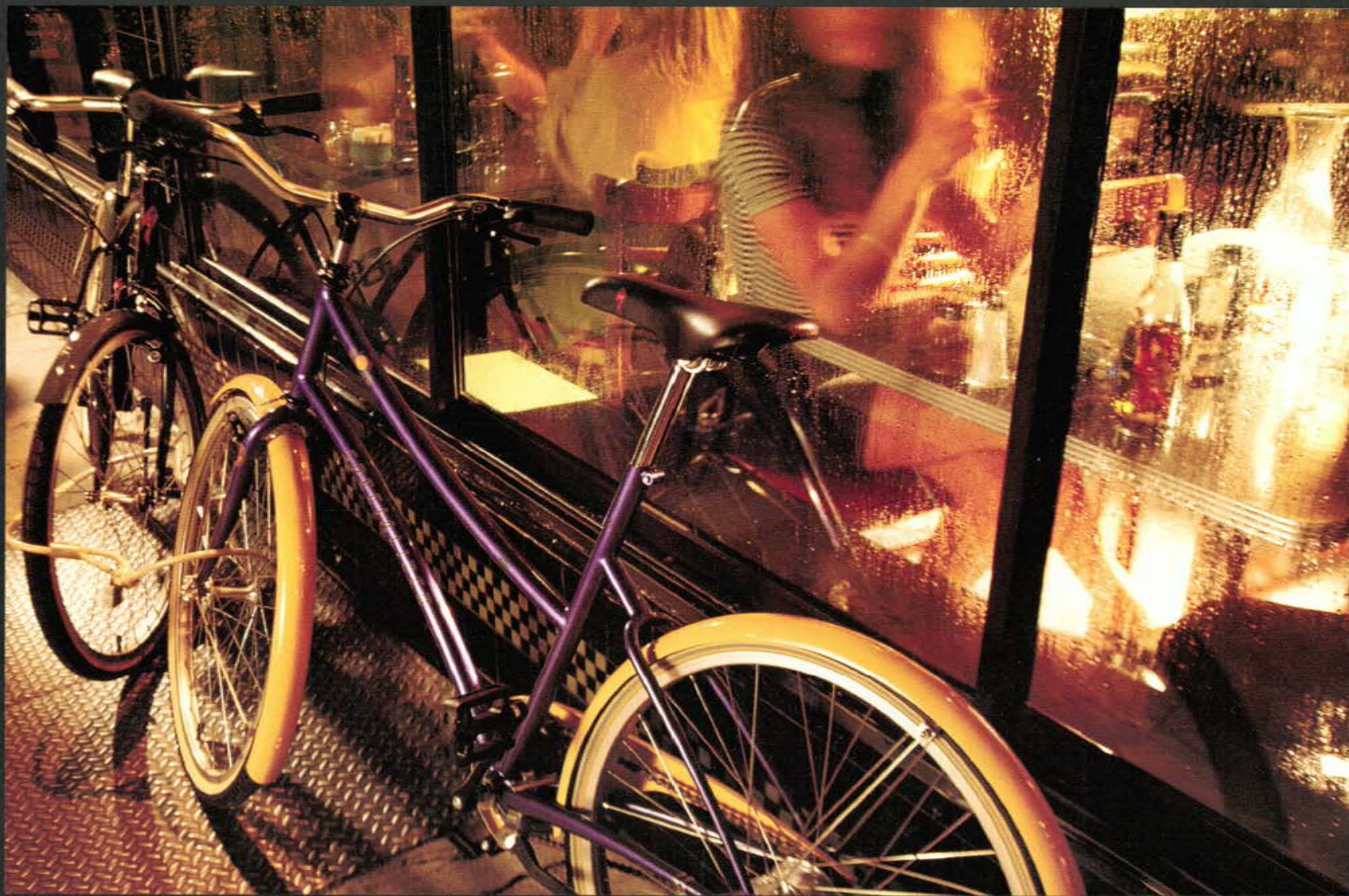
# TEAM SPECIALIZED



*See the guy out in front? No offense, but chances are you'll never, ever be as awesome on a mountain bike as he is. Don't feel bad, though. He's Ned Overend, the undisputed king of the sport, a World Champion, winner of six NORBA Nationals, and one of the four racers on the Specialized racing team. His worthy colleagues: Silvia Fürst (1992 World and European championships), Jeff Osguthorpe (1992 Junior Cross-Country World and Junior National championships), and "Insane" Wayne Croasdale (1992 Dual Slalom World Champion). Only Specialized has sponsored a racing team for so long (ten years), and the reason is that nobody gives better feedback on how to improve a bike than pro racers. The better the racers, the better the feedback. The better the feedback, the better the bikes.*



# GLOBE



*It only takes one trip to Amsterdam or Milan to realize that Europe has long had a love affair with urban cycling. There, people look forward to riding to school, work, a local café, or a friend's home for dinner. Truly inspired, the Specialized designers created Globe, what we believe to be the world's most intelligently made urban bike. Affordable, comfortable, nearly maintenance-free, and—dare we say it—probably the most original looks you've ever seen on a bike (somehow, both modern and retro at the same time).*





### PreView 2.5

This sleek, lightweight bike light features a super bright bulb that outshines the leading brands. Our exclusive PreView Optical System provides a broad, far-reaching beam pattern. Low-beam energy saver. LED battery life indicator. Weatherproof. Quick-release handlebar mount.



### GLOBE 7 LUXE

The ultimate urban bike for anyone who'd feel a lot better about taking to the streets on two wheels, instead of four. It's already equipped with all the stuff you'd probably wind up adding anyway. A deluxe, built-in lighting system. A useful cargo rack. A secure wheel lock. A convenient kickstand. A comfortable saddle. Plus an easy-to-use Sachs Pentasport 7-speed internal gearing hub that you shift merely by twisting the handlebar grips. Wraparound fenders, protective chainguard, front cantilever brake and rear coaster brake. Men's and women's models, in Small, Medium, and Large. Limited quantities available. Lilac (women's, shown) or Green (men's).

*"The point is to ride among the trees, not cut them down." So says Penny Noel, the mastermind behind the environmentally-respectful way Specialized products are packaged. "Since so much of the allure of riding is having a beautiful planet to ride on, I feel a responsibility to do our part. That means packages are constructed from recycled materials, use less ink, and require no varnishes, which can be toxic." Can a bike made of recycled newsprint be far behind, Penny? "We're working on it."*

21







## GLOBE 7

*Because it's a Globe, this bike is loaded with street smarts. But we've also loaded it up with a few practical "extras."*

*Such as a 7-speed internal hub, with a wider gearing ratio that's perfect for hills and valleys. There's also a kickstand, a built-in wheel lock, and a headlight—so you won't have to rush home before sunset. Stylish chainguard, full-wrap fenders, front cantilever brake, rear coaster brake, and rust-proof alloy rims. Men's and women's models, in Small, Medium, and Large. Denim Blue (women's) or Olive (men's).*



### GLOBE 3

*Basic transportation will never be the same again, thanks to the affordable Globe 3. Its frame design is an eye-catcher, all right, but those sweeping curves are really there to make it easy to step in and ride off in all types of clothes. An efficient, 3-speed Sachs Torpedo internal hub, full-wrap fenders, and cool-looking chainguard keep baggy pants and skirts from getting caught or dirty. Simple coaster brake on the rear wheel, cantilever brake up front. Men's and women's models in Small, Medium, and Large. Blue/Green (women's, right) or Warm Black (men's, below).*



### Lock Q'R

*An ingenious idea that's appreciated by every cyclist who hates the hassle of removing the front wheel every time they lock up their bike. Use the patented Lock Q'R, slip the key into your pocket or fanny pack, and you're done with it.*





# EPIC



24

*The debate rages on in cycling circles: Which material makes the best road bike? Steel? Aluminum? Titanium? Personally, we think each has its merits—so we created Epic, a family of carbon fiber bikes that miraculously offers the merits of all three. Every tube in the Epic frame has a carbon fabric layup that's unique to the function of that tube alone. The race-winning result: a frame that's lighter than steel, more shock damping than aluminum, and stiffer than titanium. Now who can debate with that?*





### Composite Wheel

Developed by Specialized and DuPont, used by the Motorola and Coors Light racing teams, and winner of the World Record 100M Pursuit at the 1993 World Championships. It's also the most aerodynamic wheel ever built, perfectly legal for time trials and criteriums, and built it to be as light as it is fast. Wind tunnel tests show this wheel can shave ten minutes off a 100-mile time trial.

Aluminum rim surfaces are brushed for excellent braking. Available in a Shimano cassette hub rear wheel format. Dura-Ace/Ultegra STI 8-speed compatible. Tubular and clincher versions.



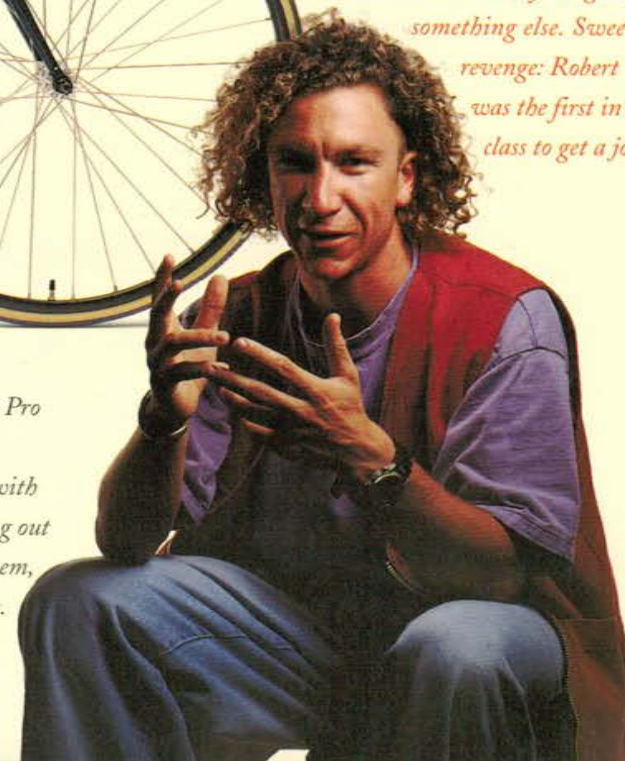
EPIC PRO

Production racing bikes just don't get smoother than this. Like all Epics, the Pro has an exclusive internal/external lug set, and a race-biased frame of unidirectional carbon fiber (strong, rigid, and way responsive). Equipped with Shimano's amazing 8-speed STI Ultegra Hyperglide componentry. Rounding out the performance package: Mavic 195 rims, stainless spokes, light TIG-welded stem, leather ProLong saddle, and anatomical road bend bars. Platinum Graphite.

Some of us remember the first time we rode a bike. Robert Egger remembers the first time he built a bike. "I was five years old, growing up on a farm in Wisconsin. Like all the other kids, I'd been bugging my dad for a bike. One day I hear his old pickup truck drive up.

He says, 'You wanted a bike? Help yourself.' The truck was piled with crashed, bent, thrown-away bikes that he had found at some junkyard. I tore them all up for parts and put my own bike together. I was hooked." Indeed. Years later, as an Industrial Design student in college, Robert designed bikes for every assignment, much to the annoyance of his teachers and fellow students, who insisted he try designing something else. Sweet revenge: Robert was the first in his class to get a job.

25





## EPIC COMP

*You see one of these up on somebody's roof rack, you can pretty much count on the owner having one serious pair of legs (and maybe a triathlon or two under their belt). The ultra-light carbon frameset features race bias tubing and aluminum lugs. Shimano 105 Hyperglide with fingertip-control STI shifters. Marvic 195 rims, stainless spokes, anatomical road bend bars for better aerodynamics, TIG-welded stem gives extra control. Leather ProLong saddle and cork foam tape. Midnight Blue.*

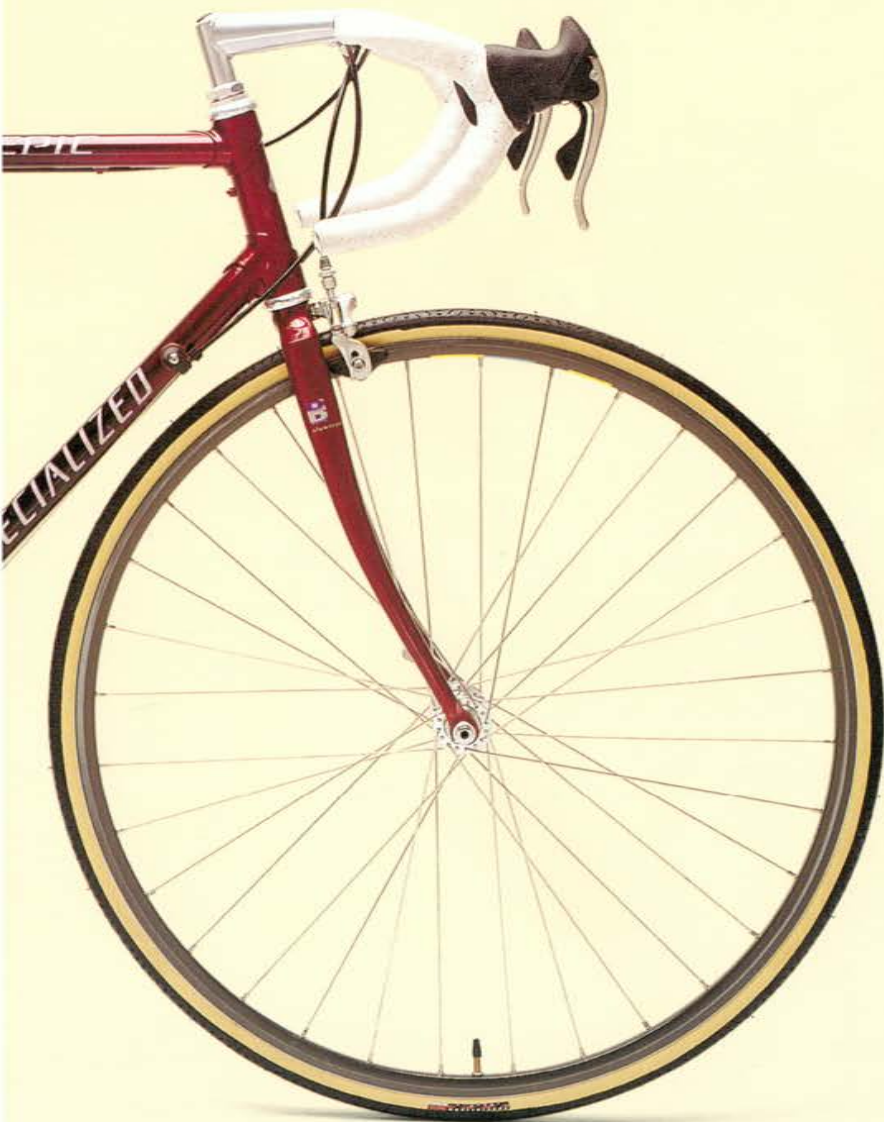


## EPIC

*If carbon fiber sets your heart racing, it's high time you met Epic—winner of more national championships than any other production bike. Our entry-level model features a featherweight 1.4-kg frame that's quite a bit stiffer than titanium (but with the terrific shock damping of carbon fiber). Also, the precision shifting of Campagnolo's 8-speed Stratos ErgoPower system. Campagnolo Omnicron rims, stainless spokes, cork foam tape, leather ProLong saddle, deep drop anatomical road bend bars. Ruby.*







### Comp Cage

*At only 47g, it's perfect for road bikes (or, for that matter, all riders who measure the grams they're adding to the bike). Composite material won't corrode, "snap-lock" top.*



*Want to equip your bike your own way?  
We suggest the carbon fiber Epic frameset, available separately.*



# ALLEZ



*In spite of all the advanced materials you find in Specialized bikes these days, this fact remains: Some of cycling's most fanatically died-in-the-wool steel purists are to be found in our own R&D group. We love the stuff. Most of our mountain bikes are built with it, and so is the cherished Allez family of road bikes. Painstakingly designed by Mark DiNucci (one of the world's most uncompromising steel zealots), the Allez frame is a masterpiece of custom workmanship. Tap your finger on the butting transitions. Hear them ring like a bell? That's the sound of perfection.*





### Sub 6 Pro

The world's lightest and best ventilated hardshell helmet, and the hands-down choice of the Specialized, Motorola, and Festina racing teams. Just 7.8 tiny ounces. Exhaust port keeps you cool by pulling fresh air through the extra large front vents. Hardshell and subframe skeleton help maintain foam integrity under impact. New no-binch buckle design, tri-glides that hold their position, and Scotchlite reflective panels. Purple Carbon Fade or Silver Carbon Fade.



### ALLEZ PRO

It's handbuilt, it's fitted with absolutely premium components, and—yes—it is very, very fast. DirectDrive thin-wall chromoly racing tubeset, teamed with a shock-absorbing aluminum fork. Shimano Ultegra 8-speed STI. Ultra-sticky Umma Gumma Turbo C tires on Mavic 195 rims. Anatomical road bend bars, lightweight heat-treated TIG-welded stem, and leather ProLong saddle. Silver Flip.

Hang around the Specialized tech support van at enough races, and eventually you'll hear of something called "the Louie test." It's when our designers take some experimental frame—or rim, fork, tire, whatever—and turn it over to Louie Eagan for the week. Louie's not some hotshot bike scientist, he's one of our sales guys. One who rides about 15,000 miles a year, and thinks nothing of pedaling from Northern California to L.A. over the weekend. Trust us: If a bike survives Louie, it can probably handle anything you throw at it.

29





## ALLEZ

*In an age of high-tech options, why do so many cyclists remain loyal to this affordable steel bike? The ride, man, the ride! Stiff, rigid, and powerful.*

*Featuring Campagnolo's new 8-speed Stratos ErgoPower shifting system, and our own thin-wall DirectDrive .8/5/.8 chromoly tubeset. Proportional-length TIG-welded stem with deep drop anatomical road bend bars, Campagnolo Omnicron rims, stainless spokes, ProLong leather saddle, cork foam tape. Black/Purple Pearl.*



## ALLEZ COMP

*A light, fast racer with enhanced-diameter, thin-walled DirectDrive chromoly tubing and full investment-cast lugset. We added an aluminum fork to cut out a lot of road shock and Campagnolo's 8-speed ErgoPower Velocé drivetrain for fast, smooth shifting. Campagnolo 32-hole alloy bottom bracket Omega 19 rims, stainless spokes, leather ProLong saddle, and cork foam tape. Red.*



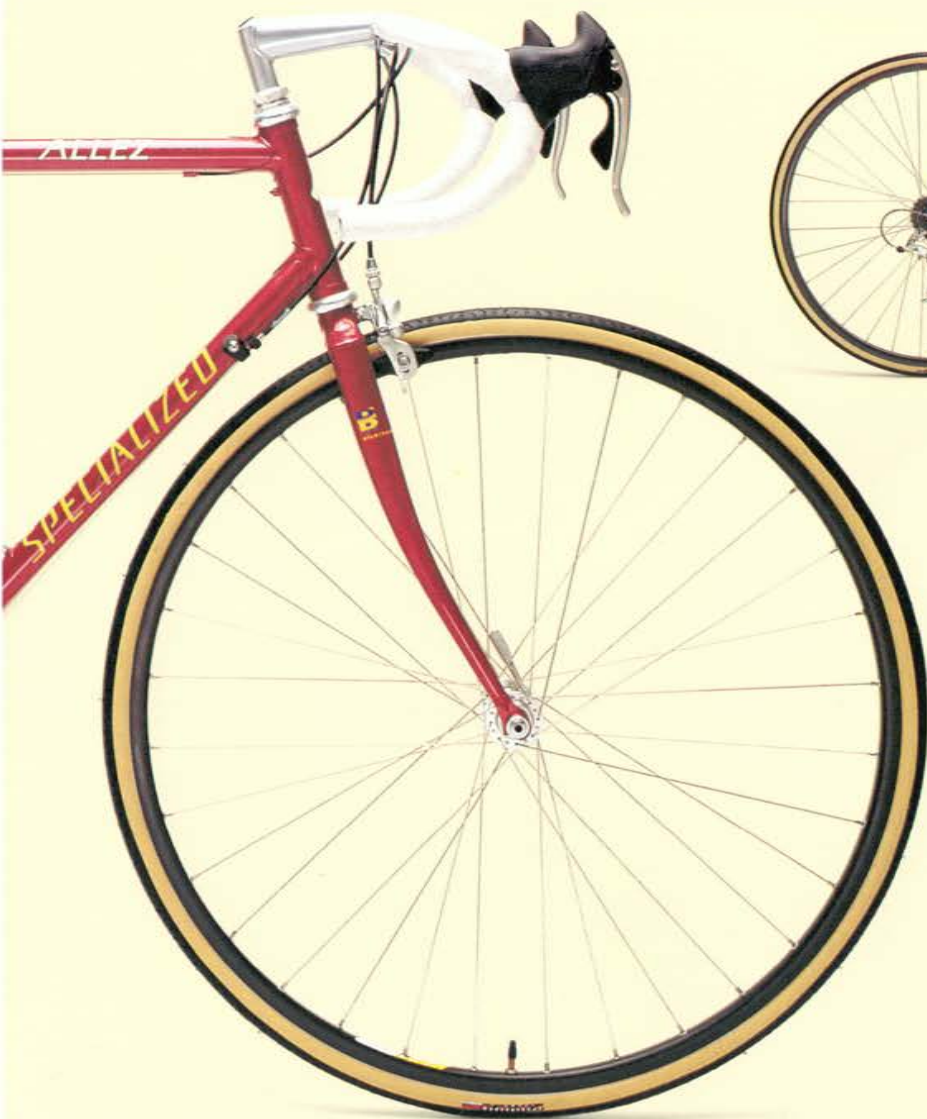
*For the dedicated do-it-yourselfer: the Allez chromoly steel frameset, available separately.*



## ALLEZ SPORT

*Show up at the next group ride on this, and nobody's gonna be leaving you behind, especially in the hills. Full investment-cast lugset with enhanced-diameter DirectDrive chromoly steel tubes.*

*Shimano RX100 21-speed Hyperglide triple crank system (your secret weapon), Mavic 195 rims, 73° TIG-welded stem, leather ProLong saddle, and cork foam tape. Olympic Blue.*



### ProLong Saddle

*Featuring a long nose section (11 3/4") and rounded back, premium Italian leather perforated cover, and Wishbone design for a more controlled flex. Available in super light titanium rail "S" version.*





# M 2 P R O



*When is aluminum not aluminum? When it's mixed with aluminum oxide, reinforced with ceramic particles, heat treated, and handcrafted into our exclusive S-Works designed M2 Metal Matrix Composite racing frame—a frame that's 20% stiffer, 8% stronger, and 10% lighter than traditional aluminum.*

*In practical terms, that means you can ride a more powerful, lighter bike without rattling your eyeballs out of their sockets.*





If you like to customize as much as we do, you'll appreciate this S-Works designed M2 Metal Matrix Composite frameset, available separately.

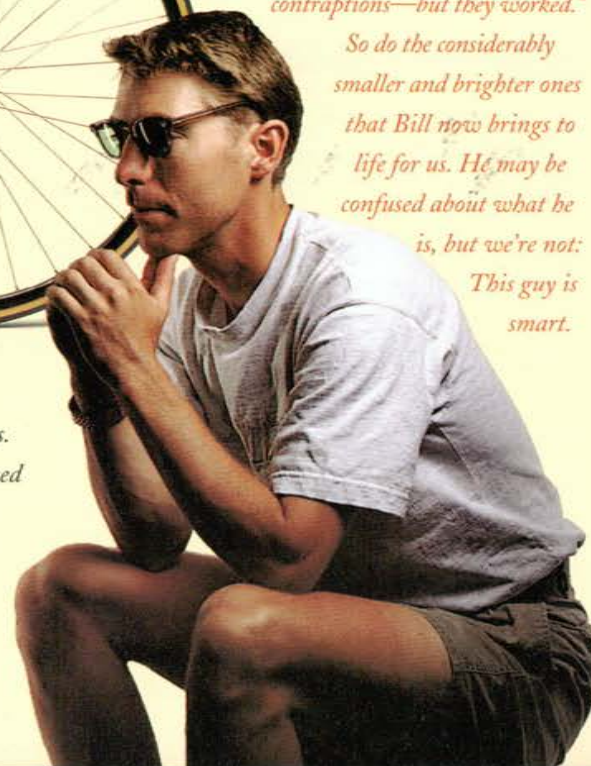


M2 PRO

There are a lot of high-tech sounding "miracle metals" being talked about in cycling magazines these days. Some are dubious, and some are downright bogus. M2, however, is the genuine article. It was originally used to build satellites, until Specialized created a version that's perfectly suited to cycling. You already read about its advantages of stiffness, strength, and weight; here's another one—it's less expensive and more practical than both titanium and carbon fiber. The M2 Pro is built with a new butting and tapering technology that allowed us to fine-tune the road feel to perfection. Outfitted with Shimano's 8-speed Ultegra Hyperglide, fast-action STI shifters, Mavic Open 4 CD rims, Wheelsmith stainless spokes, leather ProLong saddle, and cork foam tape. M2 Anodized.

*It's not exactly printed on his business card, but Bill Hanson calls himself, "50% engineer, 50% designer, 100% confused." He builds prototype models, solves thorny hardware problems, dabbles in electronics, and handles our computer-aided engineering. He's also our resident expert on lights. "For years, my buddies and I would take full-moon rides in the state park every month—wild stuff, someone always came home bloody. This was long before today's high-tech lights. Eventually I started rigging up my own light systems out of car parts. Really ugly, brutal contraptions—but they worked."*

*So do the considerably smaller and brighter ones that Bill now brings to life for us. He may be confused about what he is, but we're not: This guy is smart.*





MODEL	STUMPJUMPER FSR	STUMPJUMPER M2 FS	STUMPJUMPER FS	STUMPJUMPER M2	STUMPJUMPER
COLORS	Grey Green	Silver Green	Dry Green	BriRac Black, Team Red	Grey Green, Red
SIZES	16.5, 18, 19, 20, 21.5	14.5, 16.5, 18, 19, 20, 21.5	16.5, 18, 19, 20, 21.5	14.5, 16.5, 18, 19, 20, 21.5	14.5, 16.5, 18, 19, 20, 21.5
FRAME	Specialized DD chromoly, TiG-welded, alloy swingarm, oil-damped FOX Racing shock	Specialized M2 Metal Matrix, replaceable vertical dropouts, suspension-corrected geometry	Specialized DD Tange Prestige, double-taper stays, square/oval chainstays, vertical dropouts, suspension-corrected geometry	Specialized M2 Metal Matrix, replaceable vertical dropout	Specialized DD Tange Prestige, double-taper stays, square/oval chainstays, vertical dropouts
FORK	Specialized Future Shock, M2 brace, adjustable damping	Specialized Future Shock, M2 brace, adjustable damping	Specialized Future Shock, M2 brace, adjustable damping	Specialized DD Tange chromoly, tapered blades	Specialized DD Tange chromoly, tapered blades
CRANK	Shimano Deore LX, 22/32/42t	Shimano Deore XT, 22/32/44t	Shimano Deore LX, 22/32/42t	Shimano Deore LX, 22/32/42t	Shimano Deore LX, 22/32/42t
PEDALS	DD Comp with clips and straps	Shimano PD-M525, SPD clipless	Shimano PD-M525, SPD clipless	DD Comp with clips and straps	DD Comp with clips and straps
F DER	Shimano Deore LX	Shimano Deore LX	Shimano Deore LX	Shimano Deore LX	Shimano Deore LX
R DER	Shimano Deore LX	Shimano Deore XT	Shimano Deore LX	Shimano Deore LX	Shimano Deore LX
GEARING	Shimano 7-speed, 11-28t	Shimano 8-speed, 11-28t	Shimano 7-speed, 11-28t	Shimano 7-speed, 11-28t	Shimano 7-speed, 11-28t
SHIFTERS	Shimano Deore LX, RFP	Grip Shift SRT500	Shimano Deore LX, RFP	Shimano Deore LX, RFP	Shimano Deore LX, RFP
LEVERS	Shimano Deore LX	Dia-Compe PC-8 Powercam	Shimano Deore LX	Shimano Deore LX	Shimano Deore LX
BRAKES	Shimano Deore LX	Shimano Deore XT	Shimano Deore LX	Shimano Deore LX	Shimano Deore LX
STEM	Tahoma Sonne II for A headset, alloy, 5° rise	Specialized investment-cast Titanium for A headset, 0° rise	Tahoma Sonne II for A headset, alloy, 5° rise	Tahoma Sonne II for A headset, alloy, 5° rise	Tahoma Sonne II for A headset, alloy, 5° rise
BAR	Specialized, DB alloy, 170 g, flat	Specialized, DB alloy, 170 g, flat	Specialized, DB alloy, 170 g, flat	Specialized, DB alloy, 170 g, flat	Specialized, DB alloy, 170 g, flat
HEADSET	Dia-Compe A headset, steel	Dia-Compe A headset, alloy	Dia-Compe A headset, steel	Dia-Compe A headset, steel	Dia-Compe A headset, steel
GRIPS	Specialized AutoPilot Comp, UG	Specialized for Grip Shift, UG	Specialized AutoPilot Comp, UG	Specialized AutoPilot Comp, UG	Specialized AutoPilot Comp, UG
HUBS	Shimano Deore LX	Shimano Deore XT	Shimano Deore LX	Shimano Deore LX	Shimano Deore LX
RIMS	Specialized Z21, alloy, 32 hole, Wheelsmith SS 14 gauge spokes	Specialized Z21, alloy, 32 hole, Wheelsmith SS 14/15 gauge	Specialized Z21, alloy, 32 hole, Wheelsmith SS 14/15 gauge	Specialized Z21, alloy, 32 hole, Wheelsmith SS 14 gauge spokes	Specialized Z21, alloy, 32 hole, Wheelsmith SS 14 gauge spokes
TIRES	Shockmaster/S 26 x 1.95 UG front, More Extreme/S 26 x 1.95 UG rear	Shockmaster/S 26 x 1.95 UG front, More Extreme/S 26 x 1.95 UG rear	Shockmaster/S 26 x 1.95 UG front, More Extreme/S 26 x 1.95 UG rear	Cannibal/S 26 x 1.95 UG front, More Extreme/S 26 x 1.95 UG rear	Cannibal/S 26 x 1.95 UG front, More Extreme/S 26 x 1.95 UG rear
POST	Tahoma 300 micro-adjust, alloy	Tahoma 300 micro-adjust, alloy	Tahoma 300 micro-adjust, alloy	Tahoma 300 micro-adjust, alloy	Tahoma 300 micro-adjust, alloy
SADDLE	Specialized ProLong, perf. leather cover, alloy Trick Release	Specialized ProLong, perf. leather cover, alloy Trick Release	Specialized ProLong, perf. leather cover, alloy Trick Release	Specialized ProLong, perf. leather cover alloy Trick Release	Specialized ProLong, perf. leather cover alloy Trick Release

MODEL	HARDROCK ULTRA	HARDROCK SPORT	HARDROCK	CROSSROADS XP	CROSSROADS SPORT
COLORS	Dark Purple Mt., Silver Flip	Indigo, Black	Steel Metallic, Teal	Warm Forest	Ozone Blue
SIZES	14.5, 16.5, 18, 20, 22	14.5, 16.5, 18, 20, 22, 16L, 19L	14.5, 16.5, 18, 20, 22, 16L, 19L, 24" wheel	16.5, 18, 20, 22	16.5, 18, 20, 22
FRAME	Specialized DD Custom chromoly butted tubing, outer-butted seat tube, TiG-welded	Specialized DD Custom chromoly butted tubing, outer-butted seat tube, TiG-welded	Specialized DD Custom chromoly butted tubing, outer-butted seat tube, TiG-welded	Full butted Chromoly SFS, sloping top tube, outer-butted seat tube	TiG-welded chromoly, sloping top tube, outer-butted chromoly seat tube
FORK	DD chromoly	High-Tensile steel	High-Tensile steel	Full chromoly	High-tensile steel, chromoly steerer
CRANK	Shimano Alivio, 24/34/42t	SR CW-XR00, 28/38/48t	SR CW-XR00, 28/38/48t	Shimano Alivio, 24/34/42t	SR CW-XR00, 28/38/48t
PEDALS	HTI P-48	HTI P-48	Wellgo 895	SR MTP-481	SR MTP-481
F DER	Shimano Alivio	Shimano C50	Shimano TY30	Shimano Alivio	SunTour XR100
R DER	Shimano Alivio	Shimano Alivio	Shimano TY30	Shimano Alivio	SunTour XR100
GEARING	Shimano 7-speed, 11-28t	Shimano 7-speed, 11-28t	Shimano 6-speed, 14-28t	Shimano 7-speed, 11-28t	SunTour 7-speed, 13-28t
SHIFTERS	Shimano Alivio, RFP	Grip Shift SRT300i	Grip Shift SRT200i	Grip Shift SRT300i	SunTour Ergotech
LEVERS	Shimano Alivio	Shimano TY21	Shimano TY21	Dia-Compe PC-5 Powercam	SunTour Ergotech
BRAKES	Shimano Alivio	Shimano TY22	Shimano TY22	Shimano Alivio	SunTour XR100
STEM	TiG-welded chromoly, 40°	TiG-welded, 40°	TiG-welded, 40°	Girvin Flexstem, 24°	Girvin Flexstem, 24°
BAR	Steel, flat	Steel, flat (Black) 2" rise (Indigo)	Steel, 2" rise	Chromoly, 1" rise	Chromoly, 1" rise
HEADSET	YST 8002, steel, sealed	YST 226, steel	YST 226, steel	YST 8002, steel, sealed	YST 8002, steel, sealed
GRIPS	Specialized Foam	Specialized for Grip Shift	Specialized for Grip Shift	Specialized for Grip Shift	SunTour Ergotech
HUBS	Shimano Alivio	Joy Yu front, Shimano Alivio rear	Alloy, quick-release	Shimano Alivio	Alloy, quick-release
RIMS	Araya AP21, alloy, 36 hole, UCP 14 gauge spokes	Araya AP21, alloy, 36 hole, UCP, 14 gauge spokes	Araya AP21, alloy, 36 hole, UCP, 14 gauge spokes	Araya PX35, alloy, 36 hole, SS 14 gauge spokes	Araya PX35, alloy, 36 hole, SS 14 gauge spokes
TIRES	Crossroads II 26 x 1.95	Crossroads II, 26 x 1.95	Crossroads II, 26 x 1.95	Nimbus II 700 x 38	Nimbus II 700 x 38
POST	Alloy, micro-adjust	Alloy, micro-adjust	Alloy, micro-adjust	Alloy, micro-adjust	Alloy, micro-adjust
SADDLE	Specialized gel foam, Quick-release	Specialized gel foam, Quick-release	Specialized super soft foam, Quick-release	Viscount, spring suspension, Cam-type quick-release	Viscount, spring suspension, Cam-type quick-release

\* Frame geometry was measured on 18" mountain bikes, and 56 cm road bikes. All specs are subject to change without notice.



ROCKHOPPER COMP FS	ROCKHOPPER COMP	ROCKHOPPER FS	ROCKHOPPER SPORT	ROCKHOPPER	HARDROCK FS
Graphite 6.5, 18, 20, 21.5 Specialized DD Light butted chromoly tubing, TIG-welded, suspension-correct geometry	Burgundy 16.5, 18, 20, 21.5 Specialized DD Light butted chromoly tubing, TIG-welded	Dark Green Metallic 14.5, 16.5, 18, 20, 22 Specialized DD light butted chromoly tubing, TIG-welded, suspension-correct geometry	Black, Steel Violet 14.5, 16.5, 18, 20, 22 Specialized DD Light butted chromoly tubing, TIG-welded	Blood Red, Slate Green 14.5, 16.5, 18, 20, 22 Specialized DD Light butted chromoly tubing, TIG-welded	Dark Green 14.5, 16.5, 18, 20, 22 Specialized DD Custom chromoly butted tubing, outer-butted seat tube, TIG-welded, suspension-correct geometry SR DuoTrak 7001
Specialized Future Shock Sport	DD chromoly	Tange Struts S with performance elastomers	DD chromoly	DD chromoly	
Shimano STX SE, 24/34/42t DD Sport with clips and straps Shimano STX Shimano STX SE Shimano 7-speed, 11-28t Grip Shift SRT500 Dia-Compe PC-5 Powercam Shimano Alivio Shimano Sonne II for A headset, alloy, 5° rise	Shimano STX SE, 24/34/42t DD Sport with clips and straps Shimano STX SE Shimano STX SE Shimano 7-speed, 11-28t Shimano STX SE, RFP Shimano STX SE Shimano STX SE Shimano Sonne II for A headset, alloy, 5° rise	Shimano Alivio, 24/34/42t DD Sport with clips and straps Shimano Alivio Shimano STX Shimano 7-speed, 11-28t Shimano Alivio, RFP Shimano Alivio Shimano Alivio TIG-welded chromoly, 10° rise	Shimano STX, 24/34/42t DD Sport with clips and straps Shimano STX Shimano STX SE Shimano 7-speed, 11-28t Shimano STX, RFP Shimano STX Shimano Alivio TIG-welded chromoly, under route cable, 24° rise	Shimano Alivio, 24/34/42t HTI P-48 Shimano Alivio Shimano STX Shimano 7-speed, 11-28t Shimano Alivio, RFP Shimano Alivio Shimano Alivio TIG-welded chromoly, under route cable, 24° rise	SR CW-XR00, 28/38/48t HTI P-48 Shimano C50 Shimano Alivio Shimano 7-speed, 11-28t Grip Shift SRT300i Shimano TY21 Shimano TY22 TIG-welded, 10° rise
Alloy, 170 g, flat Dia-Compe A headset, steel Specialized for Grip Shift Shimano STX Specialized Z23, alloy, 32 hole, SS 14 gauge spokes Shockmaster 26 x 1.95 front, More Extreme 26 x 1.95 rear Shimano 300, micro-adjust, alloy Specialized ProLong, perf. cover, alloy Quick Release	Alloy, 170 g, flat Dia-Compe A headset, steel Specialized AutoPilot Comp Shimano STX SE Specialized Z23, alloy, 32 hole, SS 14 gauge spokes Ground Control 26 x 1.95 front, More Extreme 26 x 1.95 rear Shimano 300 micro-adjust, alloy Specialized ProLong, perf. cover, alloy Quick Release	Alloy, 170 g, flat TH OV-850P, steel Specialized AutoPilot Shimano Alivio Specialized X25, alloy, 32 hole, SS 14 gauge spokes Shock Master 26 x 1.95 front, More Extreme 26 x 1.95 rear Alloy, micro-adjust Specialized gel foam, perf. cover, Cam-style quick-release	Alloy, flat YST 8002, steel, sealed Specialized AutoPilot Shimano STX Specialized Z23, alloy, 32 hole, SS 14 gauge spokes Ground Control 26 x 1.95 front, More Extreme 26 x 1.95 rear Alloy, micro-adjust Specialized gel foam, perf. cover, Cam-style quick-release	Alloy, flat YST 8002, steel, sealed Specialized AutoPilot Shimano Alivio Araya GP-710, alloy, 32 hole, SS, 14 gauge spokes Ground Control 26 x 1.95 Alloy, micro-adjust Specialized gel foam, perf. cover, Cam-style quick-release	Steel, flat TH OV-850P, steel Specialized for Grip Shift Joy Yu front, Shimano Alivio rear Araya AP21, alloy, 36 hole, UCP 14 gauge spokes Shockmaster 26 x 1.95 front, More Extreme 26 x 1.95 rear Alloy, micro-adjust Specialized gel foam Quick-release
CROSSROADS	CROSSROADS CRUZ	GLOBE 3	GLOBE 7	M2 PRO	EPIC PRO
Black Green, Burgundy 14.5, 16.5, 18, 20, 22, 16L, 19L	Aqua Fresh, Plum Grape 16.5, 18, 20, 22, 16L, 19L	Warm Black, Blue Green Sm, Med, Lg	Olive, Denim Blue Sm, Med, Lg	M2 Anodized 50, 52, 54, 56, 58, 60	Platinum Grey 50, 52, 54, 56, 58, 60
TIG-welded chromoly, sloping top tube, outer-butted chromoly seat tube High-tensile steel, chromoly steerer	TIG-welded chromoly, sloping top tube, outer- butted chromoly seat tube High-tensile steel	Specialized Design high-tensile steel with Specialized fenders, bell, kickstand Specialized Design high-tensile steel	Specialized Design high-tensile steel with Specialized fenders, bell, kickstand, rear rack, lock, Specialized Design high-tensile steel	M2 MMC butted, tapered tubes with titanium investment cast seat collar DD aluminum, chromoly steerer	Racing Bias carbon tubes, cast internal/external fugs, stainless dropout DD aluminum, chromoly steerer
SR CW-XR00, 28/38/48t SR MTP-481 Shimano C50 Shimano C50 Shimano 6-speed, 14-28t Grip Shift SRT 200i Shimano C50 Shimano C50 SR MTS 300, forged alloy, 25° Steel, 2" rise YST 8002, steel, sealed Specialized for Grip Shift Steel, quick-release Araya PX35, alloy, 36 hole, SS, 14 gauge spokes Nimbus II 700 x 38	SR CFC-405, 28/38/48t Wellgo 895 Shimano TY30 Shimano TY30 Shimano 6-speed, 14-28t Grip Shift SRT100 Shimano TY21 Shimano TY22 SR MTS 300, forged alloy, 25° Steel, 2" rise YST 663, steel Specialized for Grip Shift Steel, quick-release Araya PX35, alloy, 36 hole, SS, 14 gauge spokes Nimbus II 700 x 38	Thun Thun N/A N/A N/A Sachs Torpedo Bonamin Coaster rear, Bonamin cant. front Steel/Alloy Steel Thun SBC Omega F, Sachs Torpedo 3 R Maccari Alloy, UCP spokes Nimbus III 26 x 1.5	Thun Thun N/A N/A Internal 7-Speed Shimano Bonamin Coaster rear, Bonamin cant. front Alloy Alloy Thun SBC Omega F, 7-speed R Maccari Alloy, SS spokes Nimbus III 26 x 1.5	Shimano Ultegra, 39/53t Shimano clipless Shimano Ultegra Shimano Ultegra Shimano 8-speed, 12-23t Shimano Ultegra STI Shimano Ultegra STI Shimano Ultegra TIG-welded chromoly, 73° Modolo 8X-Tenos, alloy Specialized Pro Alloy CorkFoam tape Shimano Ultegra Mavic Open 4 CD, 32 hole WheelSmith 14/15 gauge spokes Turbo C, 700 x 20, UG	Shimano Ultegra, 39/53t Shimano clipless Shimano Ultegra Shimano Ultegra Shimano 8-speed, 12-23t Shimano Ultegra STI Shimano Ultegra STI Shimano Ultegra TIG-welded chromoly, 73° SR CMB-251, alloy Specialized Pro Alloy CorkFoam tape Shimano Ultegra Mavic 195, 32 hole, SS 14/15 gauge spokes Turbo C 700 x 20, UG
Alloy, micro-adjust Specialized gel foam, Quick-release	Steel, chrome-plated Specialized gel foam, Quick-release	Steel Specialized Binder bolt	Steel Specialized Binder bolt	Alloy, micro-adjust Shimano 300 Specialized ProLong, perf. leather cover Chromoly binder bolt	Alloy, micro-adjust Specialized ProLong, perf. leather cover, Chromoly binder bolt



MODEL	EPIC COMP	EPIC	ALLEZ PRO	ALLEZ COMP	ALLEZ	ALLEZ SPORT
COLORS	Blue Pearl	Ruby	Silver Flip	Red Metallic	Black Purple Pearl	Olympic Blue
SIZES	50, 52, 54, 56, 58, 60	50, 52, 54, 56, 58, 60	43, 48, 50, 52, 54, 56, 58, 60	43, 48, 50, 52, 54, 56, 58, 60	43, 48, 50, 52, 54, 56, 58, 60	43, 48, 50, 52, 54, 56, 58, 60
FRAME	Racing Bias carbon tubes, cast internal/external lugs, stainless dropout	Racing Bias carbon tubes, cast internal/external lugs, stainless dropout	SBC investment-cast lugs, chromoly 8/5/8 tubeset with vertical dropouts	SBC investment-cast lugs, chromoly 8/5/8 tubeset with vertical dropouts	SBC investment-cast lugs, chromoly 8/5/8 tubeset with vertical dropouts	SBC investment-cast lugs, chromoly 8/5/8 tubeset with vertical dropouts
FORK	DD aluminum, chromoly steerer	DD aluminum, chromoly steerer	DD aluminum, chromoly steerer	DD aluminum, chromoly steerer	DD aluminum, chromoly steerer	DD chromoly
CRANK	Shimano 105, 39/53t	Campagnolo Stratos, 39/52t	Shimano Ultegra, 39/53t	Campagnolo Velocé, 39/53t	Campagnolo Stratos, 39/52t	Shimano RX100, 30/42/52t
PEDALS	Shimano 105 clipless	Shimano 105 clipless	Shimano 105 clipless	Shimano 105 clipless	Shimano 105 clipless	Shimano RX100, w/clips & straps
FRONT DER	Shimano 105	Campagnolo Stratos	Shimano Ultegra	Campagnolo Velocé	Campagnolo Stratos	Shimano RX100
REAR DER	Shimano 105	Campagnolo Stratos	Shimano Ultegra	Campagnolo Velocé	Campagnolo Stratos	Shimano RX100
GEARING	Shimano 8-speed, 12-23t	Campagnolo 8-speed, 12-23t	Shimano 8-speed, 12-23t	Campagnolo 8-speed, 12-23t	Campagnolo 8-speed, 12-23t	Shimano 7-speed, 13-26t
SHIFTERS	Shimano 105 STI	Campagnolo Stratos Ergopower	Shimano Ultegra STI	Campagnolo Velocé Ergopower	Campagnolo Stratos Ergopower	Shimano RX100
LEVERS	Shimano 105 STI	Campagnolo Stratos Ergopower	Shimano Ultegra STI	Campagnolo Velocé Ergopower	Campagnolo Stratos Ergopower	Shimano RX100
BRAKES	Shimano 105	Campagnolo Stratos	Shimano Ultegra	Campagnolo Velocé	Campagnolo Stratos	Shimano RX100
STEM	TIG-welded chromoly, 73°	TIG-welded chromoly, 73°	TIG-welded chromoly, 73°	TIG-welded chromoly, 73°	TIG-welded chromoly, 73°	TIG-welded Chromoly, 73°
BAR	SR CMB-251, alloy	SR CMB-251, alloy	SR CMB-251, alloy	SR CMB-251, alloy	SR CMB-251, alloy	SR CMB-251, alloy
HEADSET	Specialized Pro Steel	Specialized Pro Steel	Specialized Pro Alloy	Specialized Pro Steel	Specialized Pro Steel	Specialized Pro Steel
GRIPS	CorkFoam tape	CorkFoam tape	CorkFoam tape	CorkFoam tape	CorkFoam tape	CorkFoam tape
HUBS	Shimano 105	Campagnolo Stratos	Shimano Ultegra	Campagnolo Velocé	Campagnolo Stratos	Shimano RX100
RIMS	Mavic 195, 32 hole, SS 14/15 gauge spokes	Campagnolo Omicron, 32 hole, SS, 14/15 gauge spokes	Mavic 195, 32 hole, SS 14 gauge spokes	Campagnolo Omega 19, 32 hole, SS 14 gauge spokes	Campagnolo Omicron, 32 hole, SS 14 gauge spokes	Mavic 195, 32 hole, SS 14 gauge spokes
TIRES	Turbo C 700 x 20, UG	Transition, 700 x 23	Turbo C 700 x 20, UG	Turbo C 700 x 23, UG	Transition 700 x 23	Transition 700 x 23
POST	Alloy, micro-adjust	Alloy, micro-adjust	Alloy, micro-adjust	Alloy, micro-adjust	Alloy, micro-adjust	Alloy, micro-adjust
SADDLE	Specialized ProLong, perf. leather cover, Chromoly binder bolt	Specialized ProLong, perf. leather cover, Chromoly binder bolt	Specialized ProLong, perf. leather cover, Chromoly binder bolt	Specialized ProLong, perf. leather cover, Chromoly binder bolt	Specialized ProLong, perf. leather cover, Chromoly binder bolt	Specialized ProLong, perf. leather cover, Chromoly binder bolt

\* Frame geometry was measured on 18" mountain bikes, and 56 cm road bikes. All specs are subject to change without notice.

ALLEZ, CROSSROADS, EPIC, GROUND CONTROL, HARDROCK, M2, NIMBUS, ROCKHOPPER, SPECIALIZED, the S LOGO, STUMPJUMPER, SPEED ZONE, and TURBO are trademarks of Specialized Bicycle Components, Inc. which are registered in the United States Patent and Trademark Office. Some of these marks are registered outside the United States. AUTOPILOT, CANNIBAL, DIRECTOR, DIRT RODZ, FS, FSR, FUTURE SHOCK, GELSOFT, GLOBE, LOCK QTR, MORE EXTREME, PREVIEW, PROLONG, RACER'S EDGE, SHOCKMASTER, SUB 6, TRICK RELEASE, UMMMA GUMMA, Z21, Z23 AND Z25 are trademarks of Specialized Bicycle Components, Inc. AHEADSET, ALIVIO, ARAYA, DEORE LX, DEORE XT, DURA-ACE, ERGO, ERGOPOWER VELOCÉ, GILVIN FLEX STEM, GRIP SHIFT, HYPERGLIDE, KEVLAR, MAVIC OPEN 4CD, OMNICON, PENTASPORT, POWERFLO, RAPID FIRE, RX100, SACHS, SCOTCHLITE, SHIMANO, SPD, STRATOS ERGOPOWER, STX COMPACT DRIVE, SUNTOUR, TANGE, and ULTEGRA STI are the trademarks of their respective owners.



## **The Specialized Warranty**

**Specialized Bicycle Components ("Specialized") makes the following Limited Warranty:**

### **One Year Limited Warranty on Complete Bicycles**

*Specialized warrants to the original owner that this new Specialized bicycle shall be free of defective materials and workmanship for a period of one year from the date of the original purchase provided the bicycle is purchased in the United States and operated under normal conditions and use. During this one-year warranty period, Specialized shall repair or replace, at its sole option, all parts that are found by Specialized to be defective and subject to this limited warranty. The original owner shall pay all labor charges connected with the repair or replacement of the bicycle frame.*

### **Lifetime Limited Warranty on Bicycle Frame**

*Specialized further warrants to the original owner that the frame of this new Specialized bicycle shall be free of defective materials or workmanship during the lifetime of the original owner. During this lifetime warranty period, Specialized shall repair or replace, at its sole option, the bicycle frame if Specialized determines the frame is defective and subject to this limited warranty. The original owner shall pay all labor charges connected with the repair or replacement of the bicycle frame.*

### **General Provisions**

*This Limited Warranty is made only to the original owner of this new Specialized bicycle, and it shall remain in force only as long as the original owner retains ownership of the Specialized bicycle. This Limited Warranty is not transferable.*

*In order to obtain service under this Limited Warranty, the original owner must deliver the Specialized bicycle to an authorized Specialized dealer, together with the Specialized warranty card and the bill-of-sale or other dated proof-of-purchase document identifying the Specialized bicycle by frame number.*

*This Limited Warranty does not apply to normal wear or tear, nor to defects, malfunctions or failures that result from the abuse, neglect, improper maintenance, alteration, modification, accident, or misuse (including, without limitation, bicycle racing, bicycle motocross, stunt bicycling or similar activities) of the Specialized bicycle.*

*This Limited Warranty is the only express or limited warranty applicable to Specialized bicycles. Any implied warranties, including warranties of merchantability and fitness for a particular purpose, shall be limited in scope and duration in accordance with this limited warranty. Specialized shall not be responsible for any direct, incidental, consequential or exemplary damages suffered by any party. The foregoing statements of warranty are exclusive and in lieu of all other remedies.*

*This Limited Warranty gives you specific legal rights; you may also have other legal rights which vary from state to state. Some states do not allow limitations on the duration of implied warranties, or the limitation or exclusion of incidental or consequential damages; therefore, the limitations and exclusions set forth in this*

*Limited Warranty may not apply to you.*

*The Limited Warranty set forth herein may not be extended, enlarged or otherwise modified by any Specialized dealer, agent or employee, and Specialized does not assume any liability or make any warranty except as stated in this Limited Warranty.*



*15130 Concord Circle, Morgan Hill, CA 95037*  
*Printed on recycled paper. ©1993 Specialized Bicycle Components, Inc.*



**SPECIALIZED**